

SHALLOW MOUNT ROAD BLOCKER/MODEL SHIELD



Technical information:

Solid steel construction with hot dip galvanized & RAL coating.

Width:	From 1.0 to <u>6.0 meter</u>
Height:	From 650 mm to 1200 mm (standard is 650 mm)
Construction height:	340 mm
Electrical engine:	Hydraulic unit with three phase motor
Electrical system:	PLC system on separate cabinet
Operating time:	adjustable 4.0 to <u>6.0 second</u> (optional 1.5s with EFD)
Operating temperature:	-40°C to +60°C (optional 70°C)
Main power:	3x400VAC 50Hz
Protection rated:	K4 or K12
Warranty:	24 months



File ver. 5, revised 25.01.2018

SHALLOW MOUNT ROAD BLOCKER

MODEL SHIELD

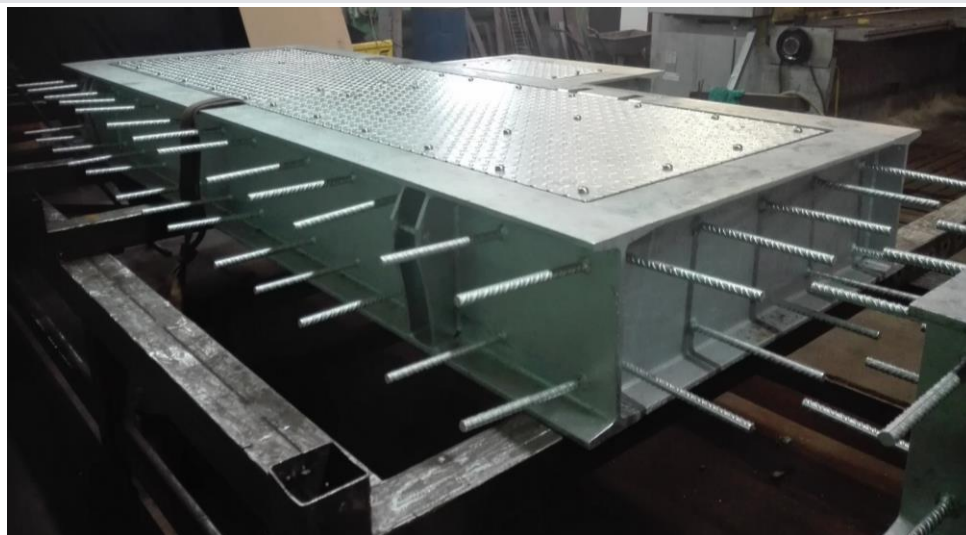
Installation type:	Underground
Structure type:	Solid steel construction with hot dip galvanized
Width of blocked space:	From 1000 mm to 6000 mm
Height of raised obstacle:	From 650 mm to 1200 mm (standard is 650 mm)
PLC (Programmable Logic Controller) type:	MITSUBISHI PLC located in external cabinet (service worldwide)
PLC (Programmable Logic Controller) location:	In external cabinet located up to 7 meter away from road blocker
Electro-hydraulic drive unit:	In external cabinet up to 7 meter away from road blocker. A lockable weather resistant enclosure/cabinet is provided for the HPU. The desing provides easy access to HPU for maintenance and emergency operations of the hydraulic system. Enclosure is provided in the corrosion resistant coating.



SHALLOW MOUNT ROAD BLOCKER

MODEL SHIELD

Axis load:	Standard 11,5 tones (higher axis load available on request, please Contact our sales department)
Operation temperature:	From -40 to +60 degree Celsius (higher temperatures available on request, please contact our sales department)
Top cover:	Made of 6 or 8 mm anti slippery checker plates hot dip galvanized acc. ISO EN 1461
Standard equipment (included in the basic set):	<ul style="list-style-type: none">- Control console panel (pushbutton type) for operations UP-DOWN-EMERGENCY-STOP- Service keys in cabinet RAISING-STOP-LOWERING- Emergency stop button- Hydraulic Manual Emergency Pump (Manual operation in case of power supply failure, allows to raise and lower the road blockers in case of power failure)- 2 pcs integrated traffic LED lights on blocking segment- 9 m long Hydraulic Hose and electric wires



SHALLOW MOUNT ROAD BLOCKER

MODEL SHIELD

Emergency manual opening:

Corrosion protection:

Control devices:

Opening time:

Emergency manual opening:

Safety light:

Corrosion protection:

External cabinet system protection grade:

Power supply:

Resistance to impact:

By integrated hydraulic Manual Emergency Pump

All steel elements hot dip galvanized, mobile obstacle powder painted to YELLOW/BLACK

Service keys in cabinet RAISING-STOP-LOWERING

Emergency stop button

Approx. 4-6 seconds

By integrated hydraulic emergency pump

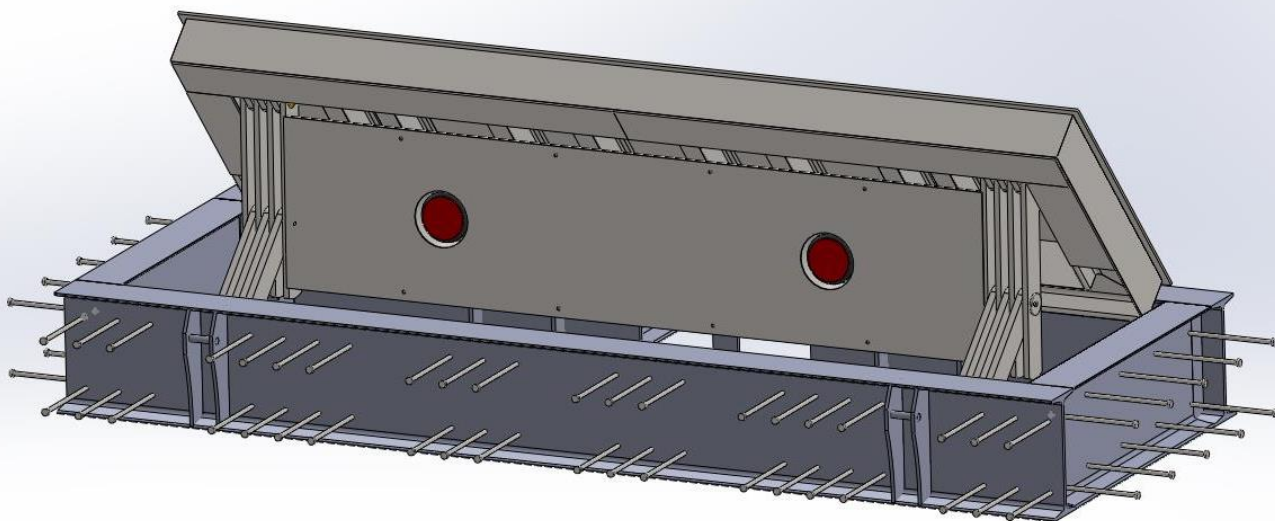
2 pcs safety lights integrated on blocking segment

All steel elements hot dip galvanized acc. ISO EN 1461, moving element painted yellow/black strips

IP 55

3x400VAC 50Hz

Very resistance to impact (stop a heavy vehicle launched at high speed) rated by desing to K4 (ASTM F2656-07 M30-PI) standard.



SHALLOW MOUNT ROAD BLOCKER

MODEL SHIELD – DEDICATED SPECIFICATION

Electro-hydraulical drive unit: In external cabinet up to 7 meter away from road blocker.
A lockable weather resistant enclosure/cabinet is provided for the HPU.
The design provides easy access to HPU for maintenance and emergency operations of the hydraulic system. Enclosure is provided in the corrosion resistant coating

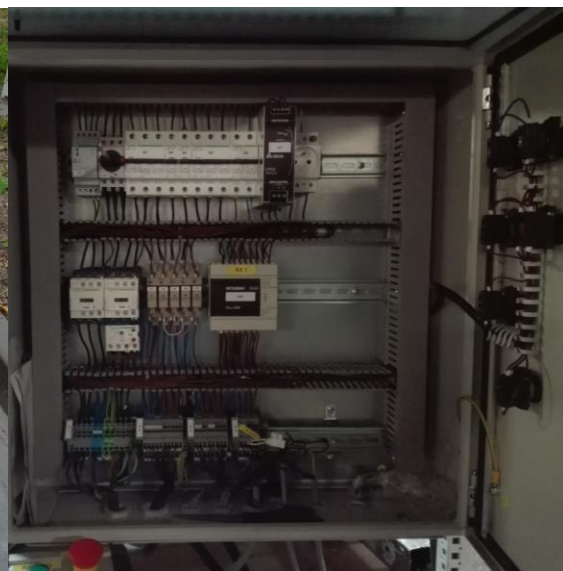


SHALLOW MOUNT ROAD BLOCKER

MODEL SHIELD – OPTIONAL EQUIPMENT

Against surcharge, not included in the basic set

- ✓ Emergency Fast Opening (1,5 seconds) by Hydraulic Accumulator
- ✓ 2 channel loops detector
- ✓ UPS (Unlimited Power Supply) allowing to operate a chosen amount of cycles
- ✓ Separate traffic post with LED RED/GREEN light
- ✓ Remote controller
- ✓ Proximity card post
- ✓ Internet online control module TCP/IP
- ✓ Ethernet online control module (LAN)
- ✓ Integration with Milestone, Honeywell (Prowatch), Bosch (BIS) system or other systems



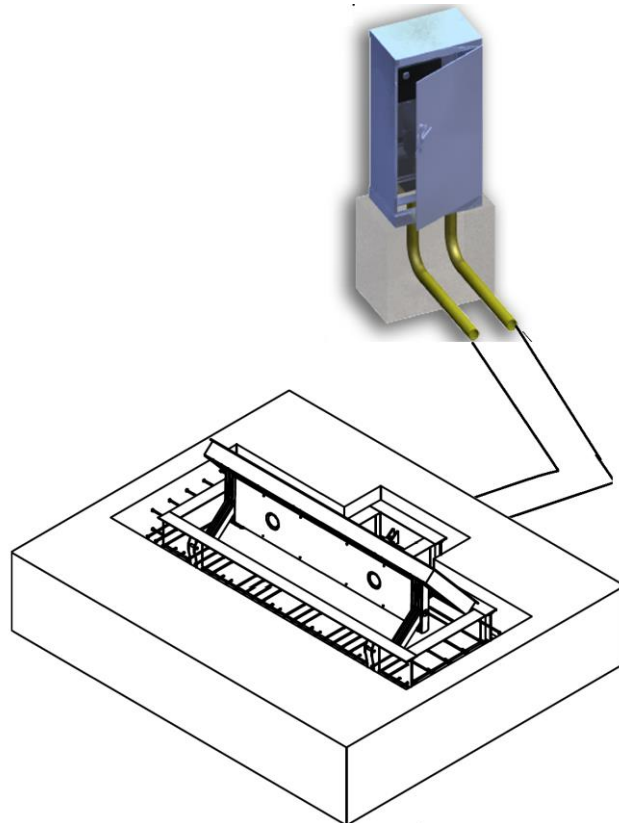
SHALLOW MOUNT ROAD BLOCKER

MODEL SHIELD – ELEMENTS OF SYSTEM

The system consist of:

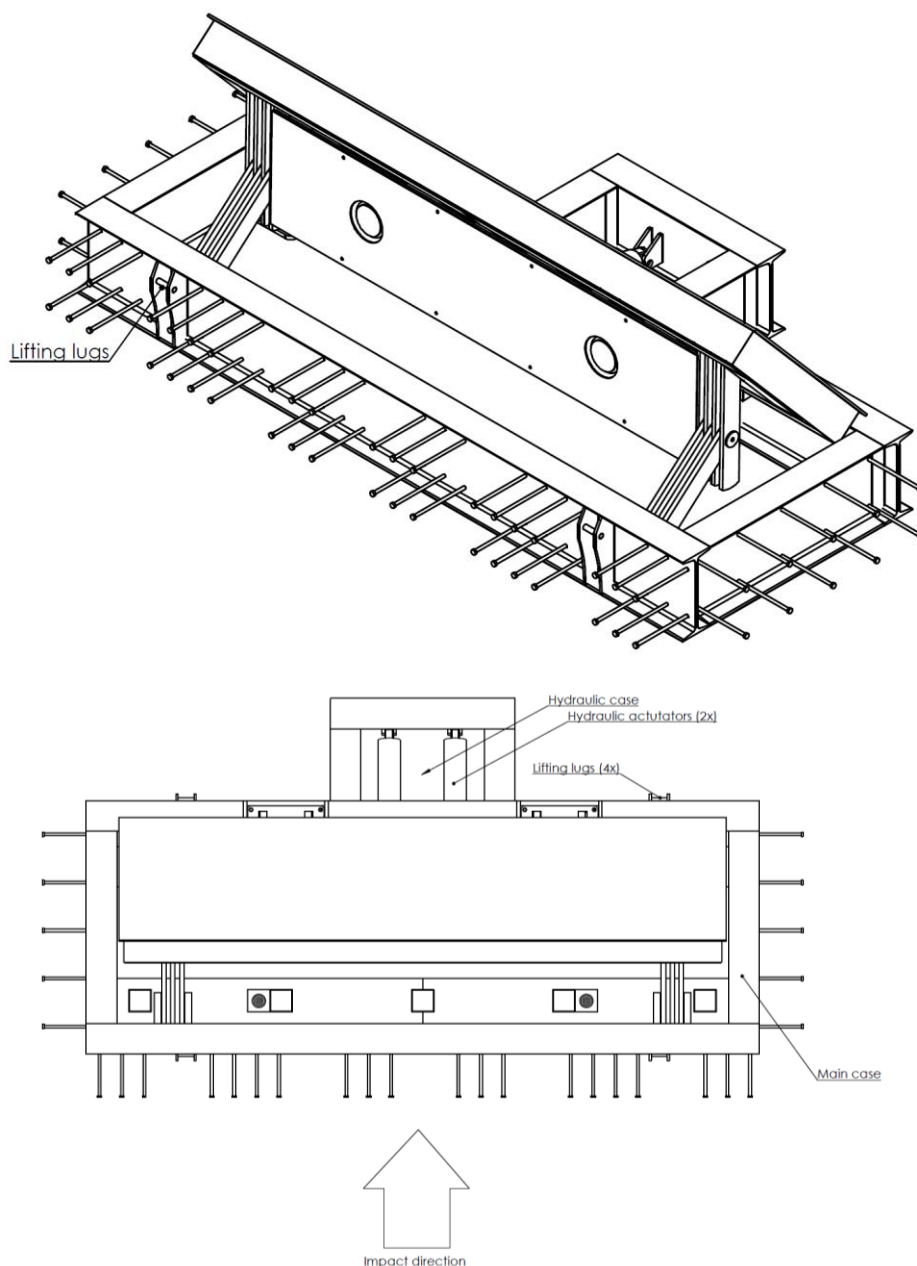
- Road Blocker which absorbs the impact
- Outside Cabinet with Control Box with drive unit which is to be placed up to 7 meter form the Road Blocker

Both elements of the system are connected with 9 metres long electrical cables and 9m long hydraulic hoses, which have to be place into the ground in round connection pipes during mechanical installation.



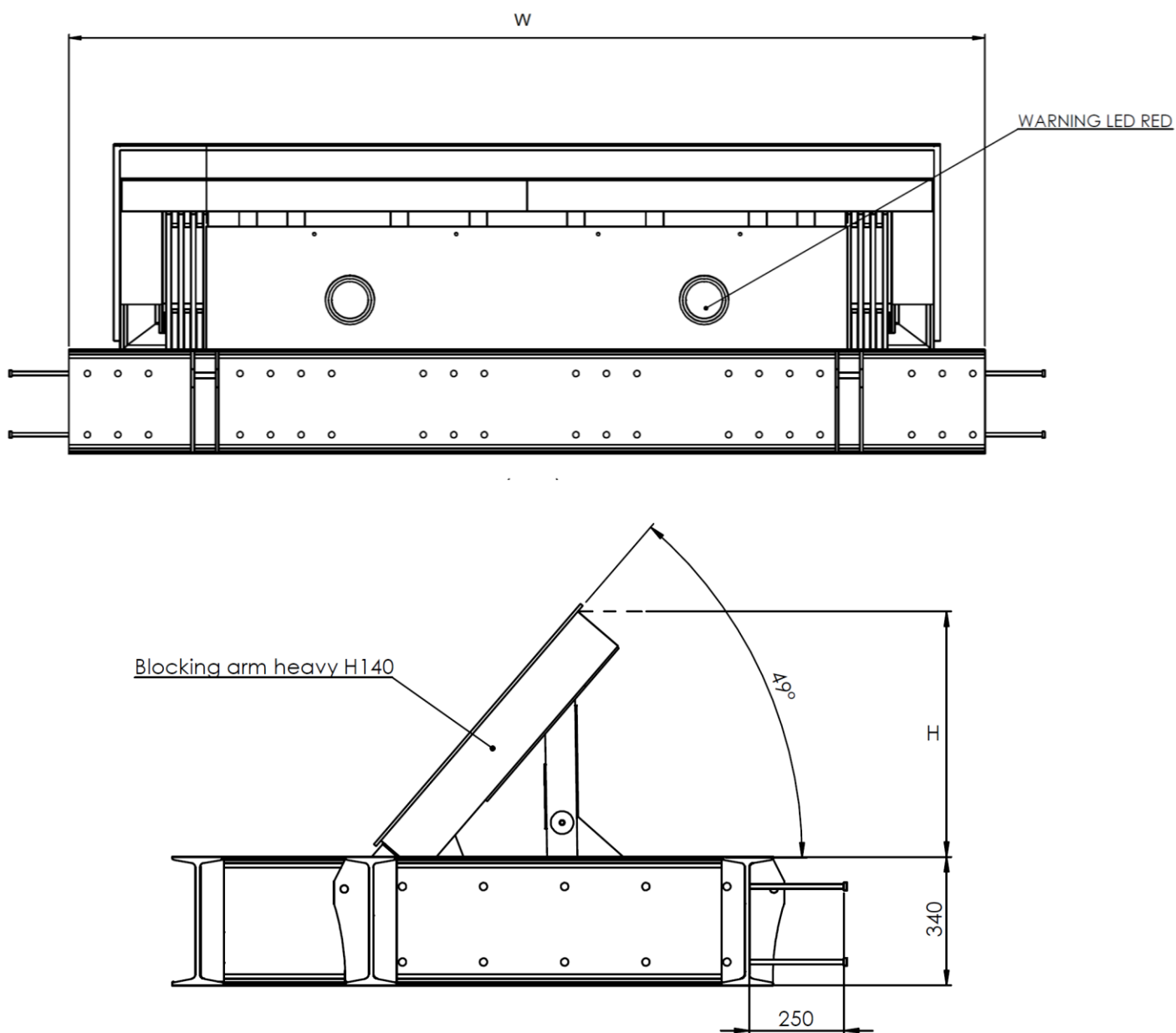
SHALLOW MOUNT ROAD BLOCKER

MODEL SHIELD – TECHNICAL DRAWINGS



SHALLOW MOUNT ROAD BLOCKER

MODEL SHIELD – TECHNICAL DRAWINGS



SHALLOW MOUNT ROAD BLOCKER

MODEL SHIELD – EXTERNAL CABINET WITH DRIVE UNIT & CONTROL UNIT



HPU + internal cabinet



HPU+ Internal Cabinet IP66



External Cabinet IP55



Internal Cabinet IP66

SHALLOW MOUNT ROAD BLOCKER

MODEL SHIELD – STANDARD EQUIPMENT



→ Control Console (UP-DOWN-STOP-EMERGENCY-STOP)

MODEL PROTECTOR – OPTIONAL EQUIPMENT



→ Proximity Card Reader



→ LED traffic post



→ Loop Detector



→ UPS/ Unlimited Power Supply



→ Safety Photocells



→ Hydraulic Accumulator for Emergency Fast Operations



→ LED traffic light on separate post

SHALLOW MOUNT ROAD BLOCKER

MODEL SHIELD – INSTALLATION WORKS



SAMPLE SITE ENTRANCE CONFIGURATION



SHALLOW MOUNT ROAD BLOCKER

MODEL SHIELD – SAMPLE SITE ENTRANCE CONFIGURATION

